

Flooding in Harberton 17th September 2023

St Clement's wall 3.06am Sunday



Vicarage Ball. Sunday 3.21am, before the Fire Brigade arrived



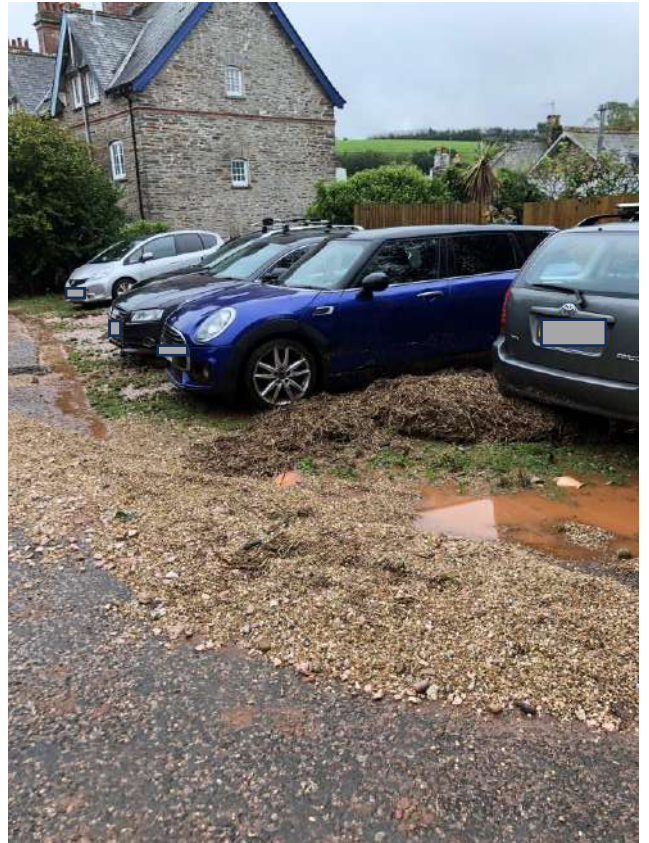
St Clement's Terrace from the gate. 3.22am Sunday



St Andrew's Cottages kitchen. 3.44am Sunday, already going down from the surge at 2.45

Example of flood waters damage to property (St Andrew's cottages)

Debris around cars behind St Clement's terrace



Vicarage ball during clean up (farmers cleaning roads). Picture shows water levels on wall



St Clement's Terrace clean up





View from hedge bank into Tristford Farm Orchard, showing wide sweep of grass flattened by water overtopping bank along a considerable distance



Looking west along Screw Lane, standing on top of hedge bank, straw/mud up to top of hedge bank, road surface not visible, covered in debris deeper than wellies



Buddle Hole East 10" twinwall pipe is buried beneath this; runoff has flowed through hedge over hedge bank



Mud on screw lane

Belsford

Blocked road into Belsford



Erosion of Watery Lane



Wash down from watery lane which blocked the Belsford hamlet's only road

